

AB 110


AB YACHTS, HULL 207

EUR 15,650,000



L.O.A:	33.70 M	Int. Design:	Marco Casamonti (Studio Archa)
Beam:	6.80 M	Ext. Design:	AB Yachts / Next Yacht Group
Max Draft:	1.30 M	Engines:	3 x MAN V12-2000 HP
Hull:	Composite	Speed:	Cruising @ 90% Load Maximum: 41 Knots
Delivery:	June/July 2025	Location:	In build in Viareggio, Italy
Accom.:	Guests 10 in 4 Crew 4 in 2		

SPECIFICATION

Type: Planing Motor Yacht
Classification: RINA C  HULL · MACH Y - Unrestricted Navigation (Pleasure Yacht)

Dimensions: Length Overall: 33.70 M / 110.6 ft
Beam: 6.80 M / 22.3 ft
Draft (full load): 1.30 M / 4.3 ft
Displacement (approx.): 110 T

Builder: AB Yachts, Next Yacht Group
Interior Designer: Marco Casamonti (Studio Archea)

Construction: Hull: Composite
Superstructure: Composite
Deck: Teak

MAIN MACHINERY

Main Engines: 3 x MAN V12 2000 HP each
Propulsion: 2 x MJP steerable waterjets + 1 x MJP central booster

Speed: Max: 41 Knots
Cruising: Approx. 90% Engine Load

Generators: 2 x KOHLER 28 kW
Stabilizers: Seakeeper 26 Gyro Stabilizer (zero-speed and underway)
Bow Thruster: SAC 320V/300V
Voltage: 400V, Three-phase + Neutral, 60Hz

CAPACITIES

Fuel Capacity: 11,500 Litres approx.
Water Capacity: 2,000 Litres

ACCOMMODATION

Guest Cabins:	10 Guests in 4 Cabins: 1 x Full-Beam Owner's Suite – 2 Guests 1 x VIP Cabin – 2 Guests 2 x Guest Cabins (with sliding beds + pullman beds) – 2+1 Guests each
Bathrooms:	4 x Guest Bathrooms 1 x Day Head (Main Deck)
Crew:	4 Crew in 2 Cabins with 2 Bathrooms and Shared Shower

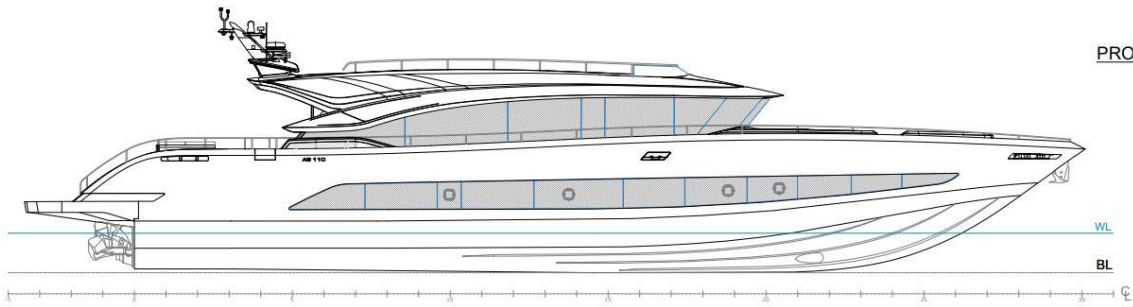
DOMESTIC EQUIPMENT

Main Salon & Galley:	MIELE Oven 60cm Cooking Top MIELE Exhaust Hood MIELE Dishwasher LIEBHERR Wine Cooler (30 bottles approx.) LIEBHERR Fridges (x2) LIEBHERR Freezer RARITAN Icemaker
Crew Mess:	MIELE Washer & Dryer MIELE Microwave FRIGONAUTICA Fridge
Exterior:	1 x Cooler Drawer

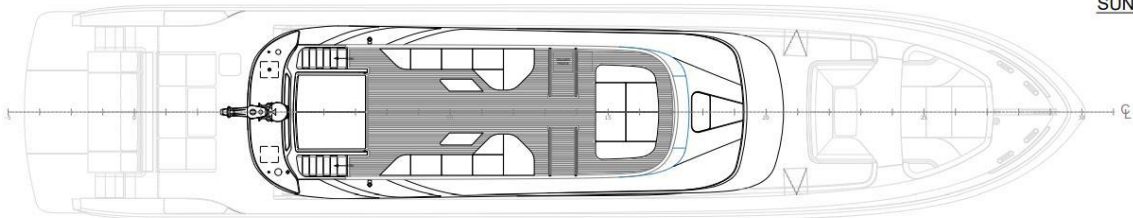
NAVIGATION & COMMUNICATION

Bridge Equipment:	2 x FURUNO 45" Ultrawide Touchscreen Monitors (Upper Console) 2 x FURUNO 28" Ultrawide Touchscreen Monitors (Lower Console) SEASYacht Integrated Navigation Suite Compact Marine Computers (x3) SIMRAD Autopilot AP70 MKII FURUNO Radar DRS4D-NXT + BBDS1 Sounder Satellite Compass SCX-20 GPS, AIS Class B, ICOM & Sailor VHF's AIRMAR Echo Sensor & Weather Station Full PLC/Network Redundancy
-------------------	--

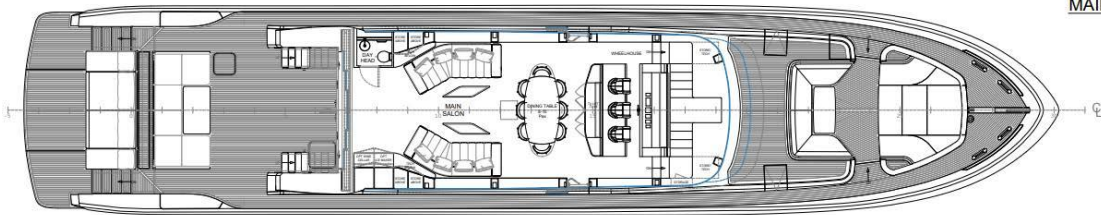
GENERAL ARRANGEMENT



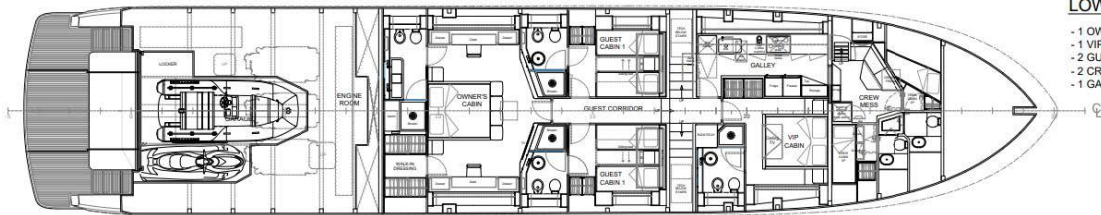
PROFILE



SUN DECK



MAIN DECK



LOWER DECK

- 1 OWNER'S CABIN
- 1 VIP CABIN
- 2 GUEST CABIN
- 2 CREW CABIN
- 1 GALLEY