

M/Y TIN TIN



BAGLIETTO | 42m | 2007

Asking price: 7.250.000 Euro

VAT Unpaid

Location: Athens, Greece

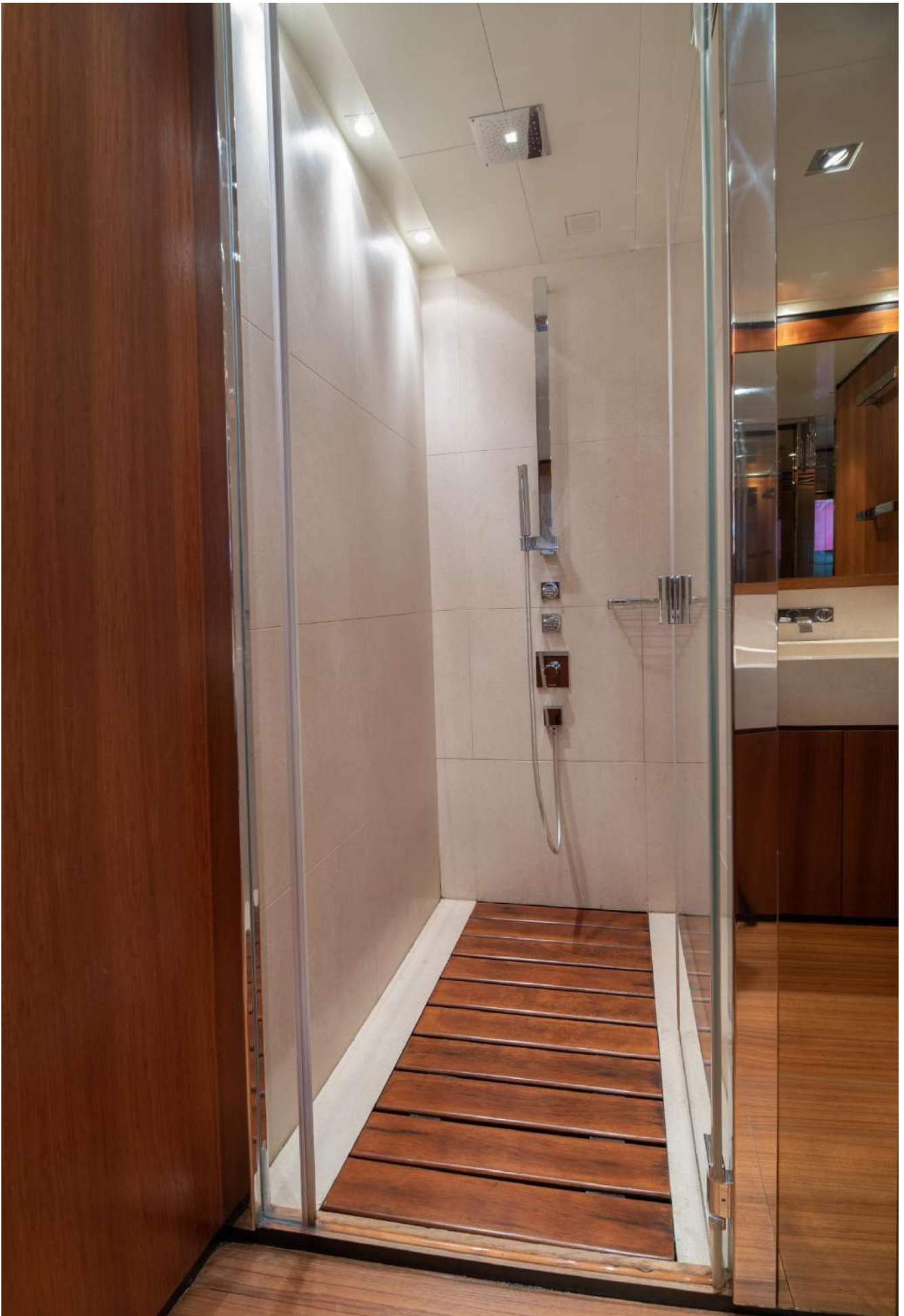


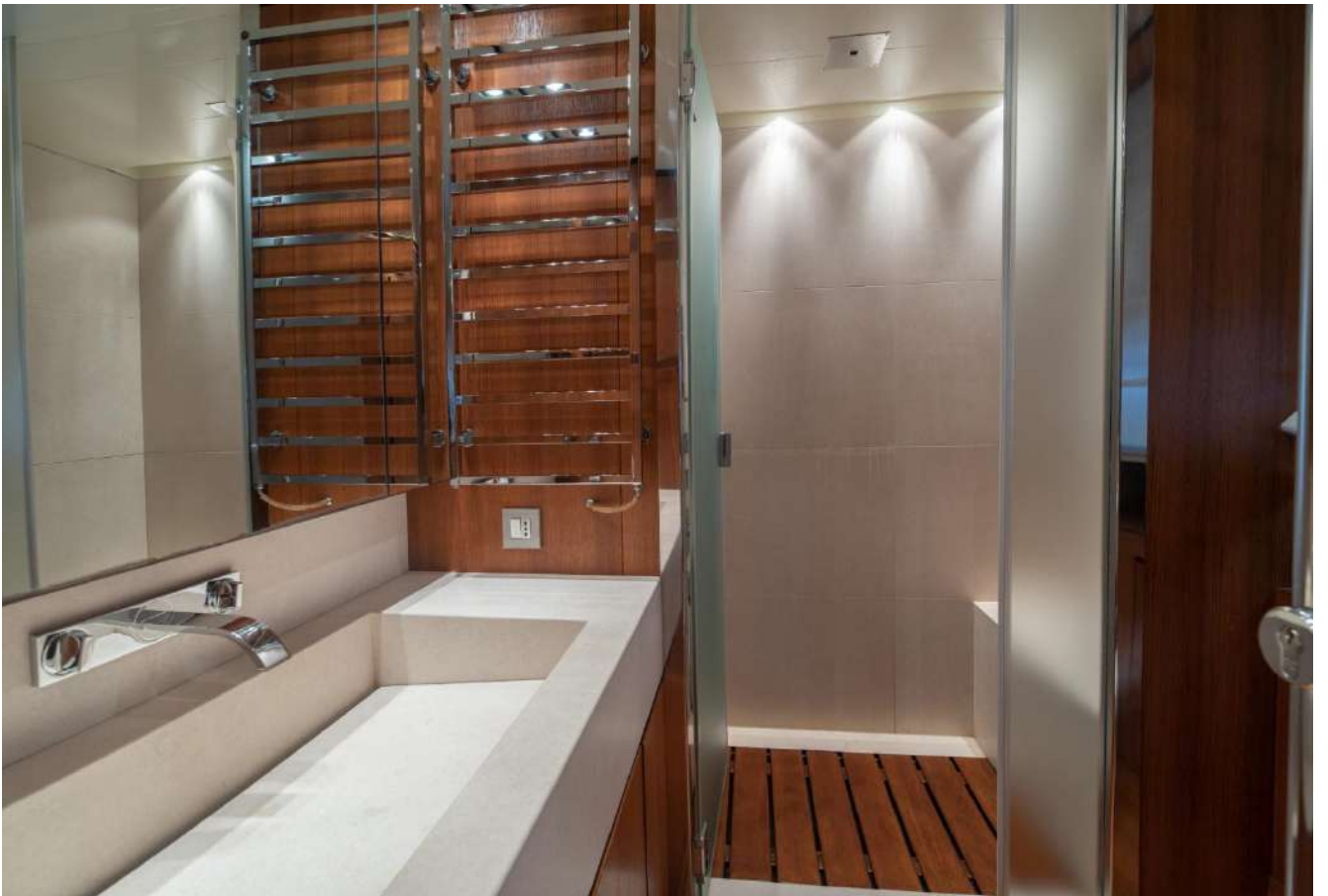


















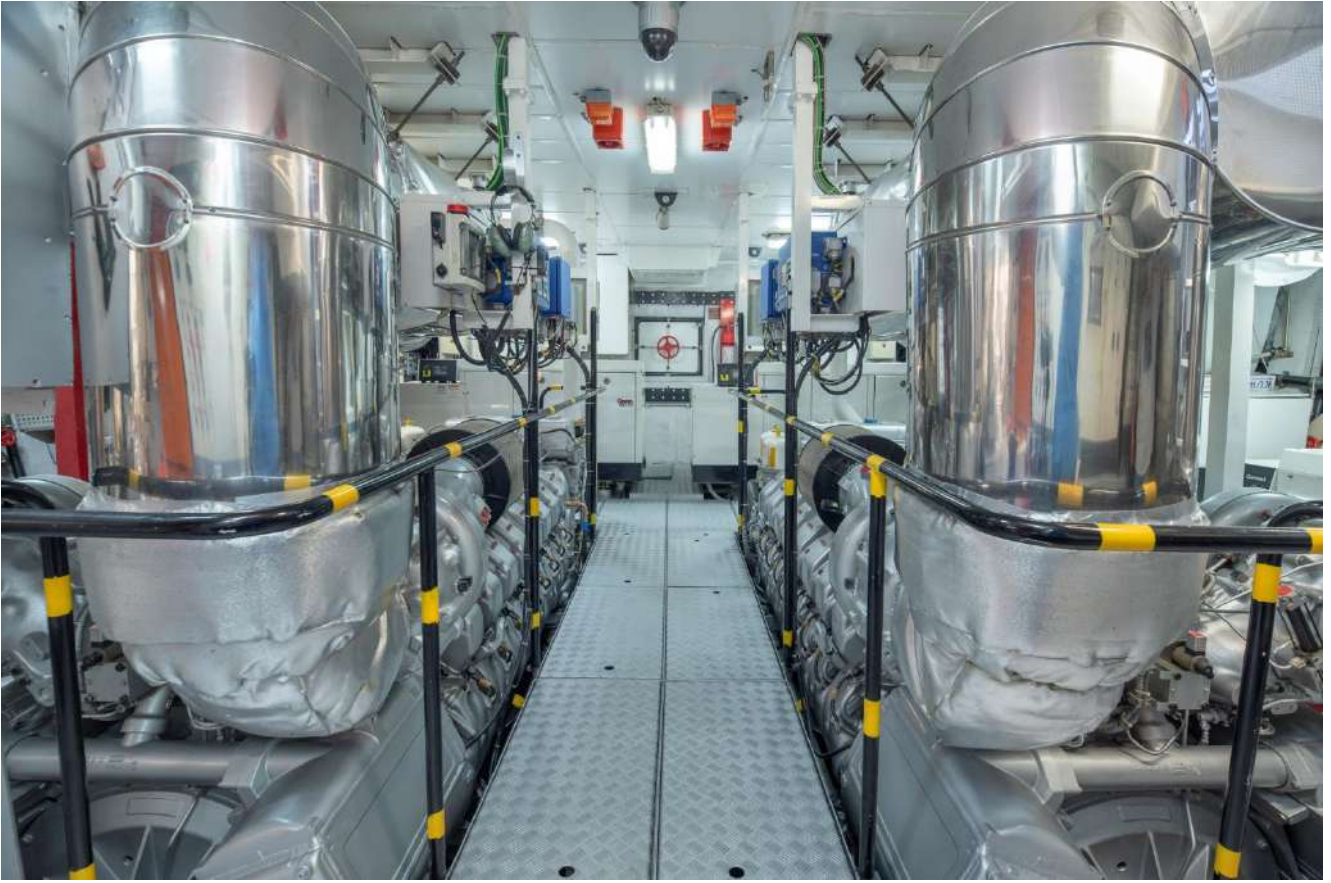












MAIN CHARACTERISTICS

Builder:	Baglietto
LOA:	41.70m
Beam:	8.00m
Draft:	3.50m
Year:	2007
Interior / Exterior Designer:	F. Paszkowski
Naval Architect:	Sculatti
Construction:	Aluminium Hull and Superstructure Teak Decks
Displacement Full Load:	210T
GRT:	370 tons
Flag:	Jamaica

CAPACITIES

Fuel:	40,000 litres
Fresh Water:	4,500 litres
Lube Oil:	750 litres
Dirty Oil:	480 litres
Grey/ Black Water:	750 litres

SPEED & RANGE

Maximum Speed:	31 knots
Maximum Speed (Half Load):	28 knots
Cruising Speed:	25 knots 1825 rph
Fuel Consumption:	1,000 litres/ hour @ 25 knots
Range (nm @ Cruising Sp):	660 nm @ 25 knots

ACCOMMODATION

12 Guests in 5 Cabins
1 x Master with en suite bathroom
2 x VIP Cabins with en suite bathrooms
2 x Twin with Pullman bed and en suite
bathrooms

CREW

1 x Captain's Cabin with en suite bathroom
3 x Crew Cabins with en suite bathroom

MECHANICAL EQUIPMENT

Engines:	2 x 3,648 Hp MTU 16V 4000 M90
Engine Hours:	Port: 1570 hours ; Starboard: 1590 hours (Feb. 2024) W5 at 900 hrs (11/2017)
Gearbox:	ZF V Drive
Propulsion:	Shaft Drive
Generators & Electricity:	2 x Onan (Jonan Deer) 80 kW 1 x Onan22kW (night service, 200hrs)
Generator Hours:	Port: 9300 hours Starboard: 10.000 hours (Sept. 2023)
Electricity:	380/ 220
Shore Power:	380V / 120Ah
Propellers:	Detra
Stabilizers:	Naiad
Bowthruster:	Electric 90Hp
Water Maker:	2 x Idromar (180 lt / hour)
Toilet System:	Vacuum System
Fuel Centrifuge/ Seperator:	Alpha Laval 1,800 lt / hour
Anchor & Mooring:	Maxwell
Boarding ladders:	Starboard

COMMUNICATION EQUIPMENT

VHF:	2 x VHF GMDSS FM8800 1 x VHF Furuno GMDSS FM8800 1 x VHF Simrad RS82
SSB:	SSB Radio Furuno FS1570
SART:	1 x Sailor
GSM:	2 x GSM lines
AIS:	NO
Loudhailer:	1 x Furuno LH300
Landline/ Intercom:	PABX Panasonic TDA 100
EPIRB:	1 x Sailor

ENTERTAINMENT EQUIPMENT

Main Saloon

1 x 42" pop-up Plasma

TV 1 x SAT receiver

1 x CD-DVD

Player 6 x

Loudspeakers

1 x Hidden Loudspeaker

Bose Home Cinema

System

Dining/ Sun Deck/ Seating Aft Deck

Remote control of saloon CD player

Owner's Stateroom

1 x 42" Plasma TV with Full Surround

System DVD

Satellite TV

access HIFI

System

Guest Cabins

Mirror Display TV in each

Satellite and Digital terrestrial TV Decoder in

each CD / DVD / Radio FM-AM in each

Bose 3/2/1 Stereo

Captain's Cabin

1 x LCD TV 20"

GALLEY & LAUDRY EQUIPMENT

Bar

1 x Ice Maker

Tapaniaky Cooking Plate

OFFICE EQUIPMENT

Fax/ Copier: 1 x Panasonic Laser Kx FL 501Fax

TENDERS & WATERSPORTS EQUIPMENT

Tenders

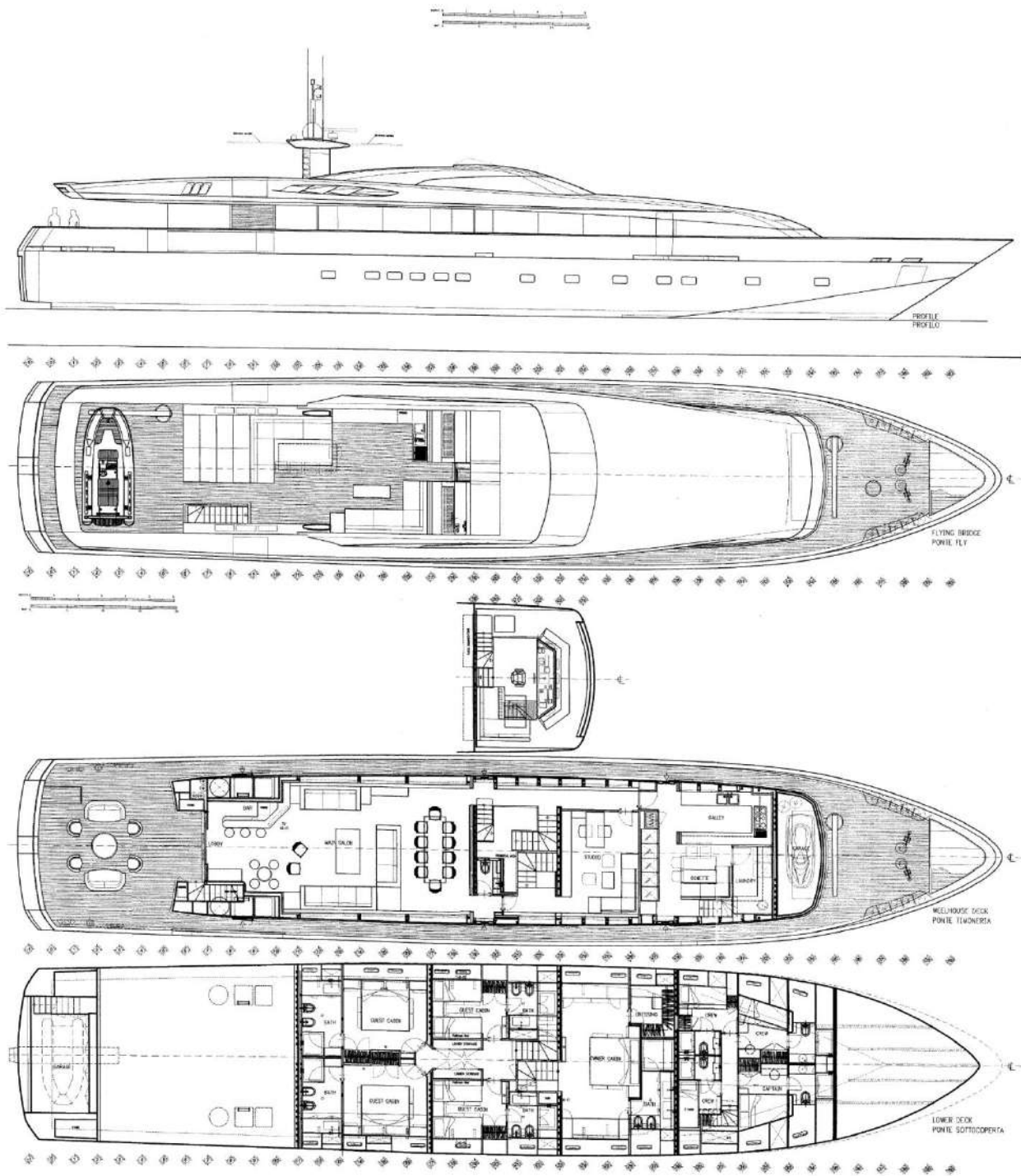
1 x 530 JOKER 115 HP Yamaha

1x 320 ZODIAK 25 HP Yamaha

Water Sports

1 x Jet Ski RXT Sea Doo

1 x Jet Ski stand up Yamaha



BAGLIETTO
ARCHIVIO

MODIFICHE CANTIERI NAVALI BAGLIETTO S.p.A.		INGLESE Scala 19,09,05	VISTO DA Disegnato Scala 1:75
Costruzioni No. 10200	Tipo Incorporazione MY 42 M	Disegno No. 200.1A.01	Fog. No. 1 di 1
Oggetto PIANO GENERALE GENERAL ARRANGEMENT		DISEGNO NUMERO NOME COMPLESSIVO DI FOGLIE	
FRANCESCO PASQUONDI PARTNER/DIR. TECNICO/DIR. ART.			
VIA S. ANGELO 8 - 20133 MILANO (MI) Tel. 02/5749111 Fax 02/5749112			